

November 29, 2009

TOLUCA v SAN LUIS (Liga Mexicana – Apertura 2009 – Liguilla)

BROADCAST NOTES

Copyright © 2009 Match Analysis



Toluca Should be the Easy Favorite

Toluca averages an impressive **1.71** goals and only **1.07** goals conceded per 90 minutes of play. **San Luis** averages **1.21** goals and **1.32** conceded per 90 minutes. Toluca's attack and most of its goals are based on individual attackers running at defenders. When a Toluca player puts his head down and heads directly at defense, watch out!

But What Happened?

During the last match, **San Luis** took **16 shots** from inside Toluca's penalty area. **Toluca** took only **6 shots** from inside San Luis's penalty area and didn't manage a single shot on goal during the match.

San Luis Defends Deep and Penetrates Successfully

San Luis defends deep making long runs from midfield and dancing into the box far more difficult. **77%** of their possessions began in their own half compared to **65%** for **Toluca**, but...**San Luis** took **16 shots** from inside Toluca's penalty area. **Toluca** took **6** and didn't put a shot on goal.

Corner Kicks – One Man Makes the Difference

Israel Lopez took **5 corner kicks**, did not create a shot. **Braulio Luna** took **4 corner kicks** and did not create a shot. **Tressor Moreno** took **2 corner kicks**...the first became an assist on the goal, the second taken 4 minutes later forced a nearly impossible goal line save. *Conclusion:* **Tressor Moreno** should be taking all the corners!

Palacios is the Key for San Luis

Palacios plays the ball directly to the forwards launching almost every attack (**25** of his **64** touches in the last match were direct to forwards). He can land the ball on the back of a mosquito on a blade of grass 60 yards away (*see separate video*). Most of San Luis's shot development played through Palacios (**8** possession leading to a shot).

Best of Both Worlds

Palacios had the highest possession on the field (**80%** of his touches continue to a teammate) while playing over half of his successful passes to the front line (**25** passes to forwards). For most players, long balls normally equate to low possession, but not with Palacios. He creates the chances and has the best possession of any player on the field. Impressive!

Workaholic

Antonio Zinha is the most active player in the league (#1) averaging **82.3** touches on the ball per 90 minutes of play this season. Zinha primarily prefers combining with **Carlos Esquivel**. He makes and receives more passes with Esquivel than all of the other attackers combined. At times they tend to play on top of each other occupying the same space and role.

Good Possession or Bad?

Toluca has the second highest seasonal possession in the league (Pachuca was #1). **Toluca's** players retain possession of the ball **72.1%** of the time they touch it. This normally comes from a slower build-up. **San Luis** is 13th in the league at **65%**.

But, and this appeared critical in the opening match, **Toluca** is 13th in the league in its ability to prevent its opponents from maintaining possession. Its opponents are able to retain the ball **67%** of the time they touch it (Queretaro was worst at **72%**). This indicates relatively poor defensive pressure giving time and space for Palacios to pick and place attackers in through Toluca's defense.

Guilty as Charged

San Luis (342) is second only to **Puebla** (365) in fouls committed this season. Combine this with **Toluca's** league leading **6** penalty kicks this season, and its ability to run at defenders and you open at least one path to find the back of San Luis's net.

November 29, 2009

TOLUCA v SAN LUIS (Liga Mexicana – Apertura 2009 – Liguilla)

BROADCAST NOTES

Copyright © 2009 Match Analysis



Touches

San Luis v Toluca – Nov 22, 2009

Rank	San Luis	Toluca	Touches
1		Antonio Zinha	77
2	Noe Maya		68
3		Martin Romagnoli	67
4	Ignacio Torres		64
6	Jesus Palacios		64
6		Israel Lopez	59
7		Manuel de la Torre	48
8	Tressor Moreno		47
8	Braulio Luna		47
10		Carlos Esquivel	45
11		Jose Cruzalta	42
12	Adrian Garcia		36
		Diego Novaretti	36
	Pablo Aguilar		36
		Nestor Calderon	36
16	Oscar Mascorro		35
17		Hector Mancilla	33
17		Edgar Duenas	33
19	Adrian Martinez		32
20	Cesar Gonzalez		31
21	Alfredo Moreno		30
22	Rodolfo Salinas		22
		Alfredo Talavera	22
24		Raul Nava	7
25		Isaac Brizuela	6
26	Omar Monjaraz		1

Touches in Attack

San Luis v Toluca – Nov 22, 2009

Rank	San Luis	Toluca	Touches
1		Antonio Zinha	64
2		Israel Lopez	43
3		Carlos Esquivel	37
4	Braulio Luna		36
	Tressor Moreno		36
6	Alfredo Moreno		30
7		Nestor Calderon	28
		Hector Mancilla	28

9		Martin Romagnoli	26
	Jesus Palacios		26
11	Cesar Gonzalez		24
12		Jose Cruzalta	19
		Manuel de la Torre	19
14	Noe Maya		18
15	Ignacio Torres		17
16	Rodolfo Salinas		14
17	Oscar Mascorro		13
18		Edgar Duenas	7
19		Isaac Brizuela	6
		Raul Nava	6
21	Pablo Aguilar		4
		Diego Novaretti	4
23	Adrian Garcia		2
24	Omar Monjaraz		1

Touches in Defense

San Luis v Toluca – Nov 22, 2009

Rank	San Luis	Toluca	Touches
1	Noe Maya		51
2	Ignacio Torres		50
3		Martin Romagnoli	43
4	Jesus Palacios		40
5	Adrian Garcia		35
6		Diego Novaretti	34
7	Pablo Aguilar		33
8	Adrian Martinez		32
9		Manuel de la Torre	31
10		Edgar Duenas	27
11	Oscar Mascorro		24
12		Jose Cruzalta	23
		Antonio Zinha	23
14		Alfredo Talavera	22
15		Israel Lopez	17
16	Braulio Luna		13
	Tressor Moreno		13
18		Nestor Calderon	10
		Rodolfo Salinas	10
20		Carlos Esquivel	8
21	Cesar Gonzalez		7
22		Hector Mancilla	5
23		Raul Nava	1

Possession

San Luis v Toluca – Nov 22, 2009

Rank	San Luis	Toluca	Poss%
1	Jesus Palacios		79.7
2	Ignacio Torres		78.7
3	Adrian Martinez		76.9
		Martin Romagnoli	76.9
5		Manuel de la Torre	73.9
		Antonio Zinha	73.9
7		Jose Cruzalta	70.0
8	Noe Maya		69.1
9		Edgar Duenas	66.7
		Isaac Brizuela	66.7
11		Israel Lopez	65.4
12	Tressor Moreno		65.1
13		Nestor	64.5

November 29, 2009

TOLUCA v SAN LUIS (Liga Mexicana – Apertura 2009 – Liguilla)

BROADCAST NOTES

Copyright © 2009 Match Analysis



Calderon		
14	Carlos Esquivel	64.3
15	Pablo Aguilar	63.6
16	Adrian Garcia	62.9
17	Rodolfo Salinas	61.9
18	Alfredo Moreno	60.9
19	Cesar Gonzalez	60.7
20	Hector Mancilla	59.3
21	Braulio Luna	59.0
22	Raul Nava	57.1
23	Oscar Mascorro	55.9
24	Diego Novaretti	47.1
25	Alfredo Talavera	41.2

Shots

San Luis v Toluca – Nov 22, 2009

Rank	San Luis	Toluca	Shots
1	Braulio Luna		7
2	Alfredo Moreno		5
3		Hector Mancilla	3
		Edgar Duenas	3
		Israel Lopez	3
6		Carlos Esquivel	2
		Tressor Moreno	2
		Pablo Aguilar	2
		Jesus Palacios	2
10		Martin Romagnoli	1
	Adrian Garcia		1
	Cesar Gonzalez		1
		Manuel de la Torre	1
		Nestor Calderon	1

	Jesus Palacios	9
	Israel Lopez	9
6	Antonio Zinha	6
7	Oscar Mascorro	5
	Edgar Duenas	5
	Nestor Calderon	5
	Martin Romagnoli	5
11	Rodolfo Salinas	4
	Cesar Gonzalez	4
	Ignacio Torres	4
	Hector Mancilla	4
	Manuel de la Torre	4
	Carlos Esquivel	4
	Noe Maya	4
18	Jose Cruzalta	3
19	Pablo Aguilar	2
20	Adrian Garcia	1
	Diego Novaretti	1

Shots on Goal

San Luis v Toluca – Nov 22, 2009

Rank	San Luis	Toluca	Shots
1	Adrian Garcia		1
	Pablo Aguilar		1

Passes Leading Directly to a Shot

San Luis v Toluca – Nov 22, 2009

Rank	San Luis	Toluca	Passes
1		Antonio Zinha	4
	Tressor Moreno		4
		Israel Lopez	4
4	Oscar Mascorro		3
5	Rodolfo Salinas		2
	Noe Maya		2
	Alfredo Moreno		2
8		Martin Romagnoli	1
		Hector Mancilla	1
		Carlos Esquivel	1
		Diego Novaretti	1
		Nestor Calderon	1
	Braulio Luna		1

Possessions Leading to a Shot

San Luis v Toluca – Nov 22, 2009

Rank	San Luis	Toluca	Poss
1	Tressor Moreno		11
2	Braulio Luna		10
3	Alfredo Moreno		9

November 29, 2009

TOLUCA v SAN LUIS (Liga Mexicana – Apertura 2009 – Liguilla)

BROADCAST NOTES

Copyright © 2009 Match Analysis



Balls Won

San Luis v Toluca – Nov 22, 2009

Rank	San Luis	Toluca	Won
1	Ignacio Torres		28
2		Diego Novaretti	25
3	Noe Maya		24
4		Martin Romagnoli	22
5	Pablo Aguilar		19
6	Oscar Mascorro		18
7	Adrian Garcia		16
		Jose Cruzalta	16
9		Antonio Zinha	15
	Jesus Palacios		15
11		Manuel de la Torre	14
		Edgar Duenas	14
13		Alfredo Talavera	11
14		Israel Lopez	10
	Adrian Martinez		10
16	Rodolfo Salinas		9
17		Nestor Calderon	8
		Carlos Esquivel	8
19	Tressor Moreno		7
20		Hector Mancilla	6
21	Cesar Gonzalez		5
	Alfredo Moreno		5
23	Braulio Luna		4
24		Raul Nava	3
25		Isaac Brizuela	1

Balls Lost

San Luis v Toluca – Nov 22, 2009

Rank	San Luis	Toluca	Lost
1	Noe Maya		19
2	Braulio Luna		14
4		Diego Novaretti	14
		Martin Romagnoli	13
		Antonio Zinha	13
6	Adrian Garcia		12
	Tressor Moreno		12
		Manuel de la Torre	12
		Israel Lopez	12
10		Jose Cruzalta	11
	Jesus Palacios		11
	Pablo Aguilar		11
13		Nestor Calderon	10
		Alfredo Talavera	10
	Oscar Mascorro		10
16	Ignacio Torres		9
17		Edgar Duenas	8

18		Hector Mancilla	7
19	Cesar Gonzalez		6
		Carlos Esquivel	6
	Adrian Martinez		6
22	Rodolfo Salinas		5
23		Raul Nava	3
	Alfredo Moreno		3
25	Omar Monjaraz		1
		Isaac Brizuela	1

Fouls Committed

San Luis v Toluca – Nov 22, 2009

Rank	San Luis	Toluca	Fouls
1	Alfredo Moreno		7
2		Hector Mancilla	4
3	Pablo Aguilar		3
		Ignacio Torres	3
	Jose Cruzalta		3
6		Antonio Zinha	2
		Carlos Esquivel	2
8		Braulio Luna	1
		Oscar Mascorro	1
	Edgar Duenas		1
		Adrian Garcia	1
		Cesar Gonzalez	1
		Raul Nava	1
	Martin Romagnoli		1
		Alejandro Palacios	1
	Manuel de la Torre		1
	Israel Lopez		1

Fouls Suffered

San Luis v Toluca – Nov 22, 2009

Rank	San Luis	Toluca	Fouls
1	Antonio Zinha		4
2	Diego Novaretti		3
3		Jose Cruzalta	2
		Hector Mancilla	2
		Noe Maya	2
	Ignacio Torres		2
	Alfredo Moreno		2
	Alejandro Palacios		2
9	Manuel de la Torre		1
	Oscar Mascorro		1
		Carlos Esquivel	1
	Edgar Duenas		1
	Cesar Gonzalez		1
		Nestor Calderon	1
	Tressor Moreno		1

November 29, 2009

TOLUCA v SAN LUIS (Liga Mexicana – Apertura 2009 – Liguilla)

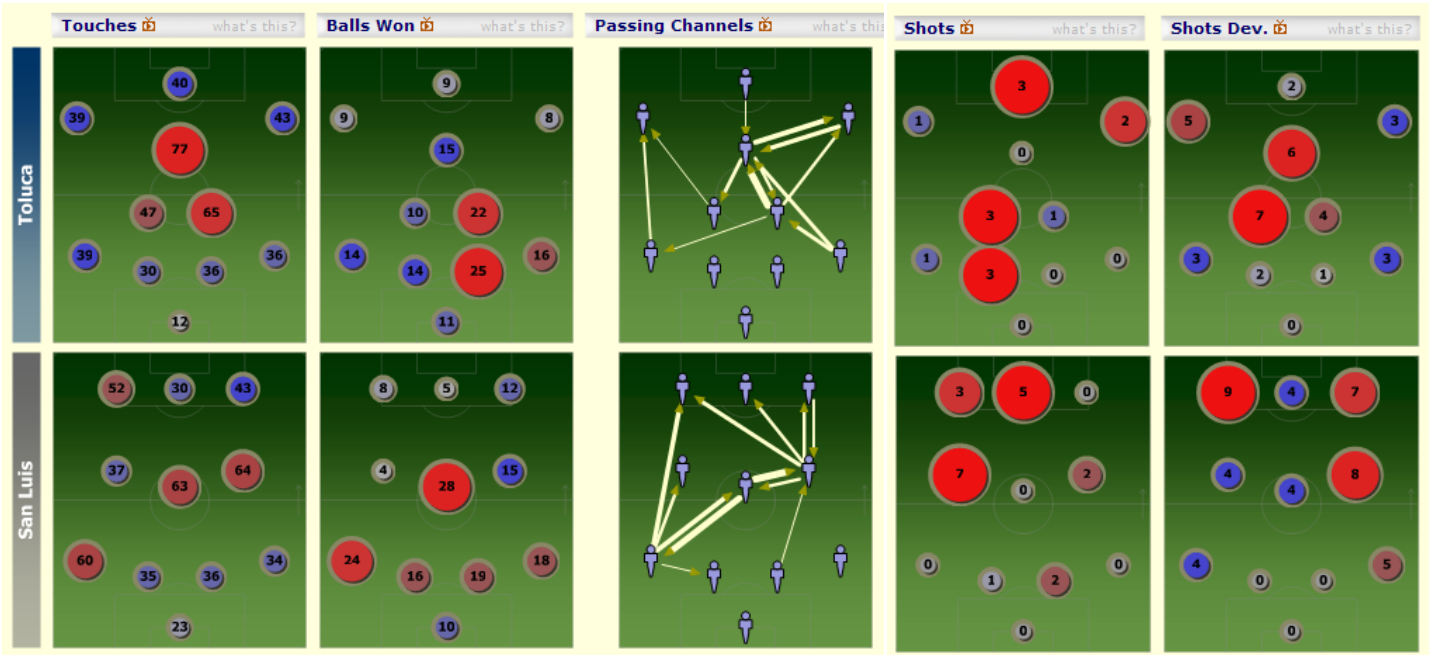
BROADCAST NOTES

Copyright © 2009 Match Analysis



Positional Analysis

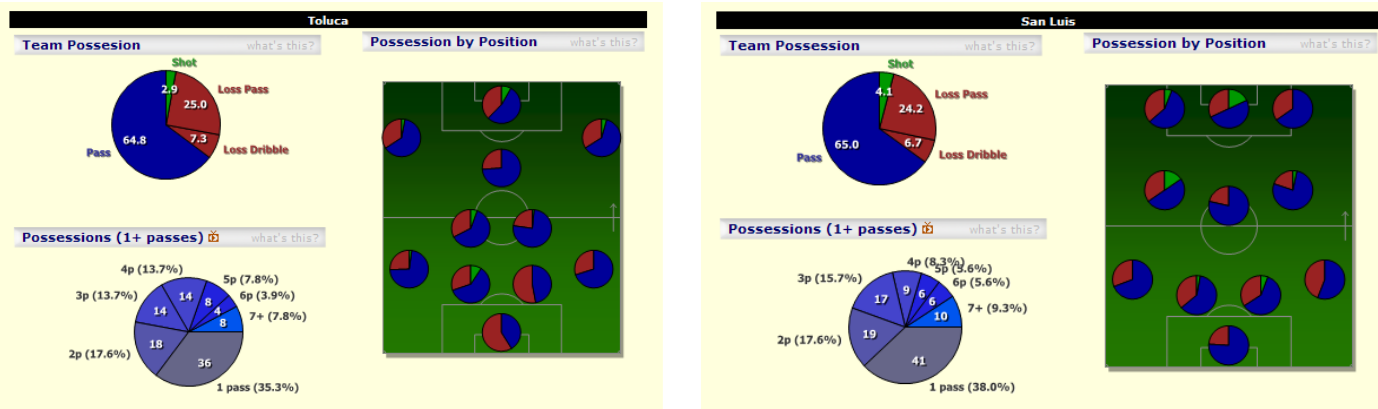
San Luis v Toluca – Nov 22, 2009



Touches highlights critical players with Zinha and Palacios leading. Defensively Torres is very active for San Luis. Passing Channels highlights the movement of the ball to Palacios with passes distributed almost equally from there to all of the forwards. For Toluca, everything plays through Zinha. Toluca shows too little of its shooting coming from the forwards. San Luis Shot Development again highlights Palacios. Note that Moreno is not shooting but plays a critical role in the development of 7 shots.

Possession Analysis

San Luis v Toluca – Nov 22, 2009



November 29, 2009

TOLUCA v SAN LUIS (Liga Mexicana – Apertura 2009 – Liguilla)

BROADCAST NOTES

Copyright © 2009 Match Analysis



Almost identical possession characteristics between the two teams. Note the difference in goalkeeper's. Toluca's goalkeeper loses the ball consistently whereas San Luis develops from the pass. Note also the weakness in possession of Novaretti. Tends to lose the ball about half the time he has it largely because he is rarely passed the ball. Almost all of his touches involve winning the ball defensively.

November 29, 2009

TOLUCA v SAN LUIS (Liga Mexicana – Apertura 2009 – Liguilla)

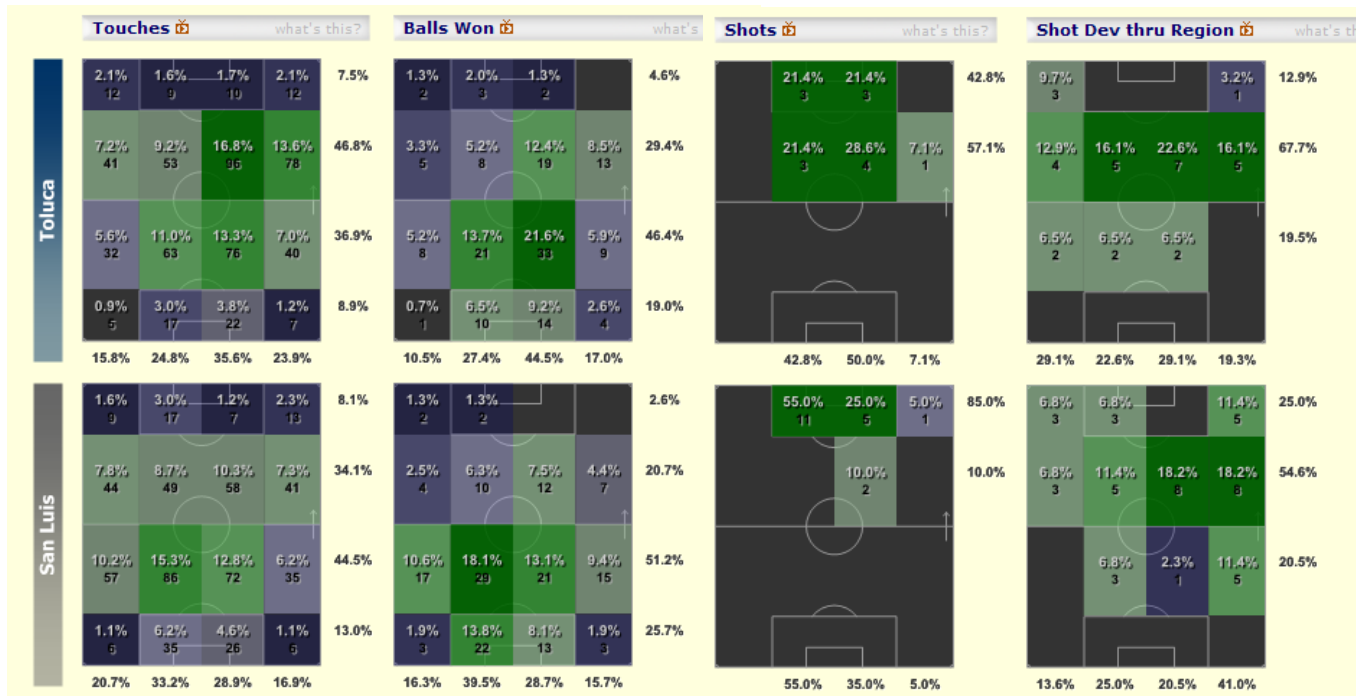
BROADCAST NOTES

Copyright © 2009 Match Analysis



Regional Analysis

San Luis v Toluca – Nov 22, 2009

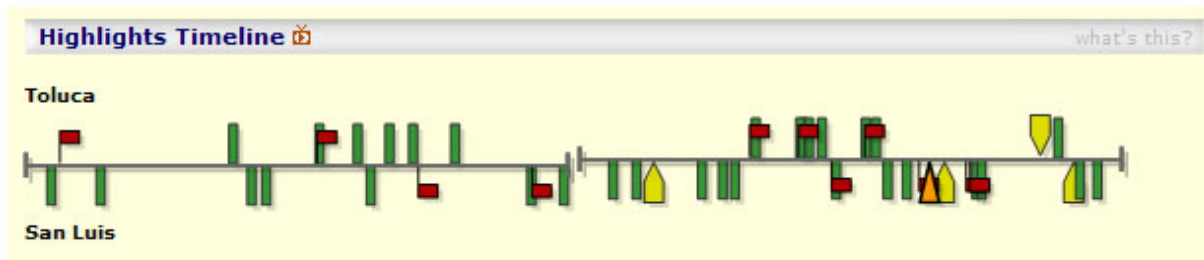


Both teams favor attacking through the right side and both development most of their shots through the right side. San Luis was much more effective getting shots inside the opponent's penalty area.

San Luis consistently starts its possessions (Balls Won) in its own half (77% of the time) indicating low pressure in the opponent's half. This generally indicates a more crowded defensive half for the opponent to attack through making it more difficult to penetrate the box.

Timeline of Key Events

San Luis v Toluca – Nov 22, 2009



November 29, 2009

TOLUCA v SAN LUIS (Liga Mexicana – Apertura 2009 – Liguilla)

BROADCAST NOTES

Copyright © 2009 Match Analysis



Note Toluca's lack of shooting (green bars) during the beginning and end of each half. They are most effective between minutes 20 and 35 of the half.

November 29, 2009

TOLUCA v SAN LUIS (Liga Mexicana – Apertura 2009 – Liguilla)

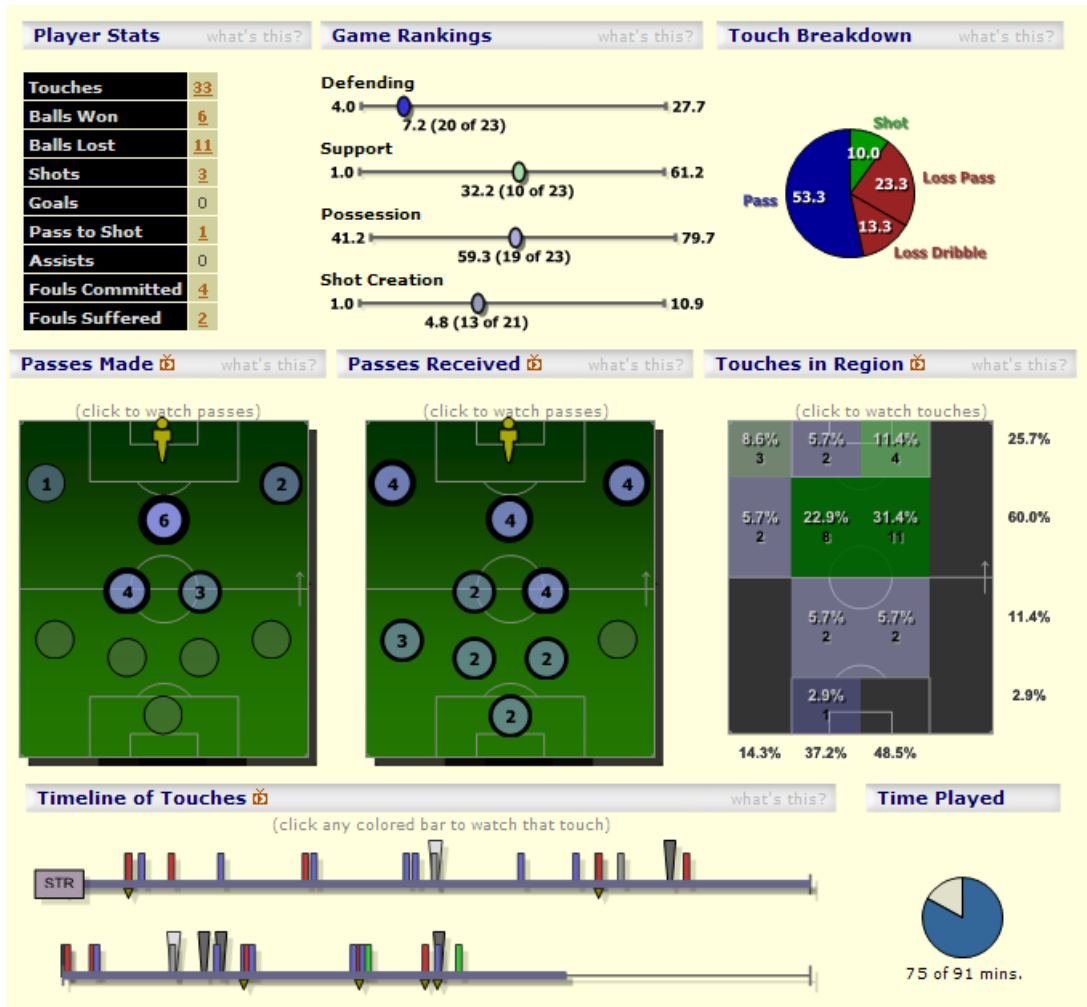
BROADCAST NOTES

Copyright © 2009 Match Analysis



Hector Mancilla

San Luis v Toluca – Nov 22, 2009



Fairly low touch count and didn't start shooting until middle of second half (green bars in timeline). Ranked 13th in shot creation which is typically poor for a key player.

November 29, 2009

TOLUCA v SAN LUIS (Liga Mexicana – Apertura 2009 – Liguilla)

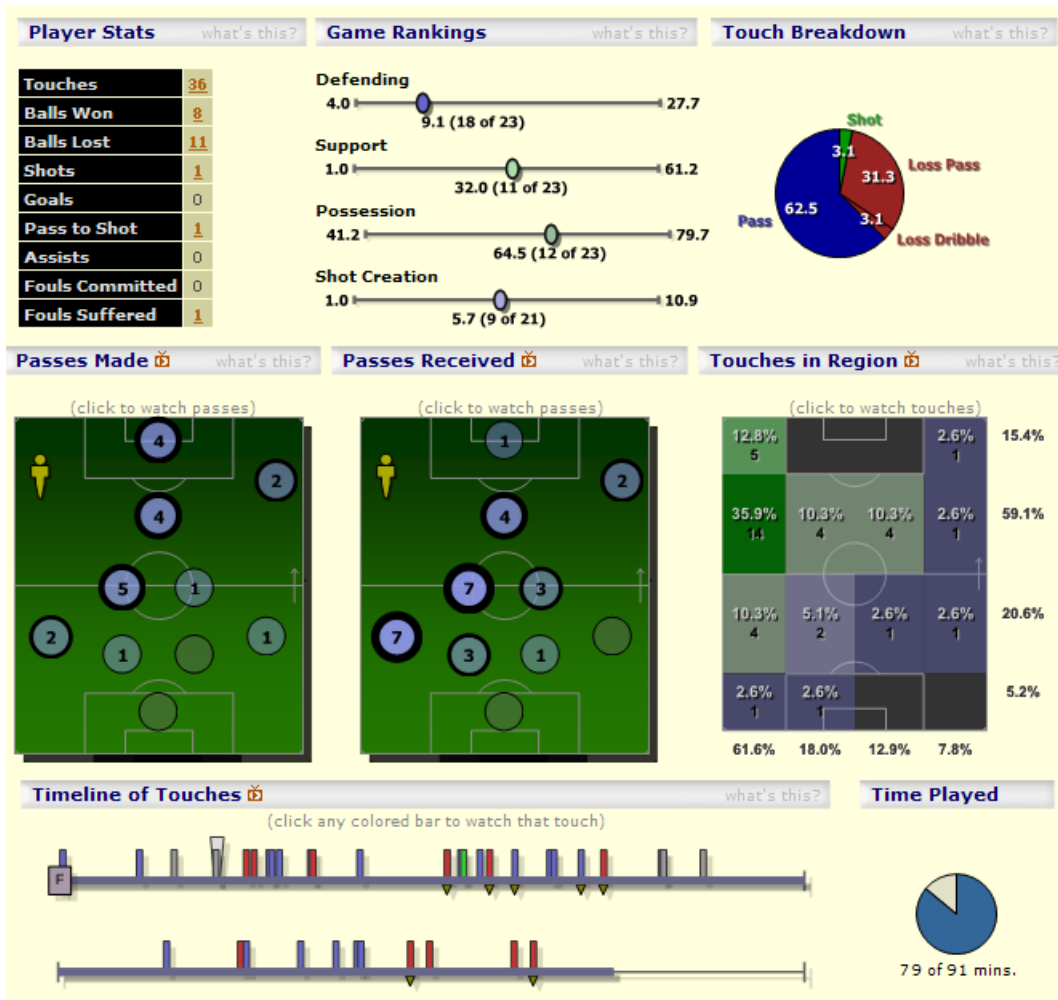
BROADCAST NOTES

Copyright © 2009 Match Analysis



Nestor Calderon

San Luis v Toluca – Nov 22, 2009



Plays very wide with not a single touch inside the penalty area. Provided one pass leading to a shot. Participates in the development but rarely takes on defenders (seen in the rare loss of the ball on the dribble).

November 29, 2009

TOLUCA v SAN LUIS (Liga Mexicana – Apertura 2009 – Liguilla)

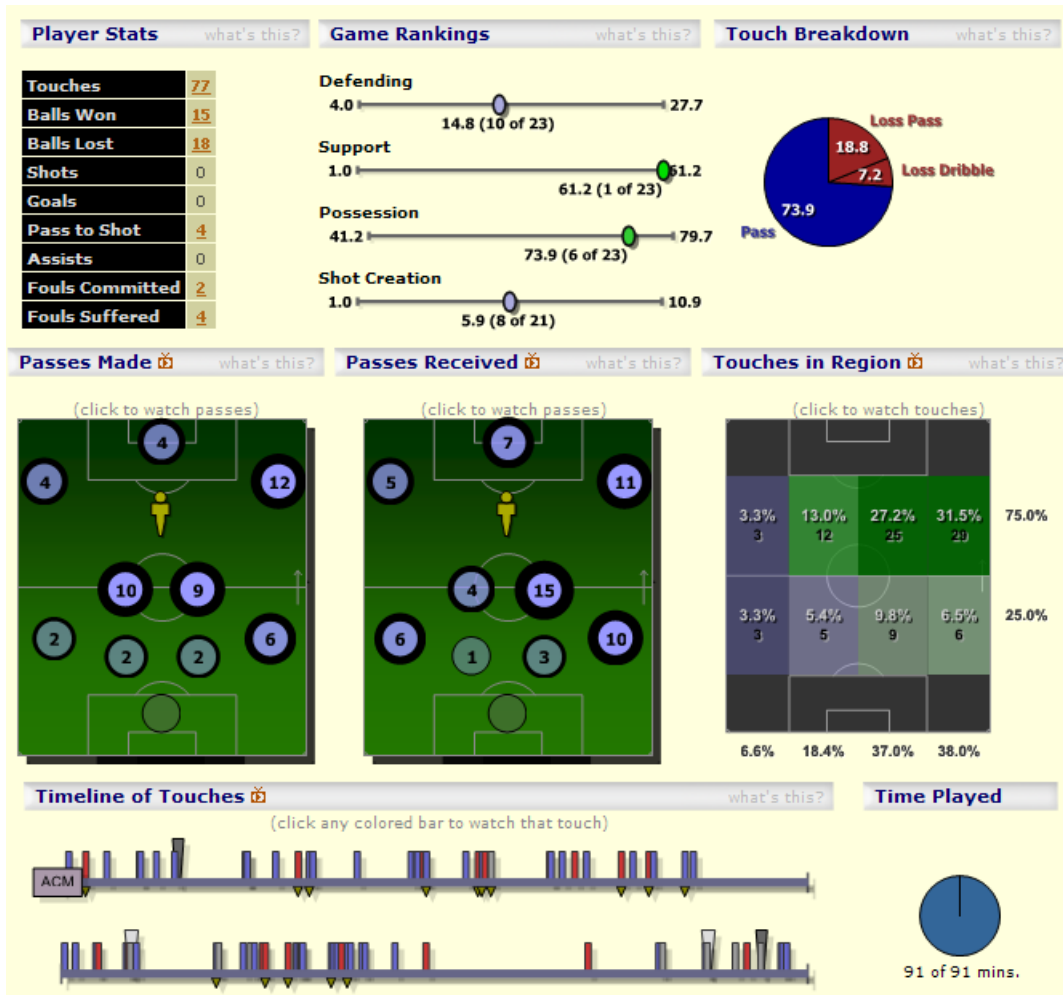
BROADCAST NOTES

Copyright © 2009 Match Analysis



Antonio Zinha

San Luis v Toluca – Nov 22, 2009



Clearly the critical player. Everything plays through Zinha. Note that he favors drifting wide to the right side to find space. Most passes go to and from Esquivel. Rarely finds the other two forwards. Compare to Palacios who hits all 3 forwards equally creating a more varied attack. Notice that for the last 25 minutes of the second half, Zinha did not win a single ball (triangles under the timeline). His effort became entirely offensive as the game neared the end.

November 29, 2009

TOLUCA v SAN LUIS (Liga Mexicana – Apertura 2009 – Liguilla)

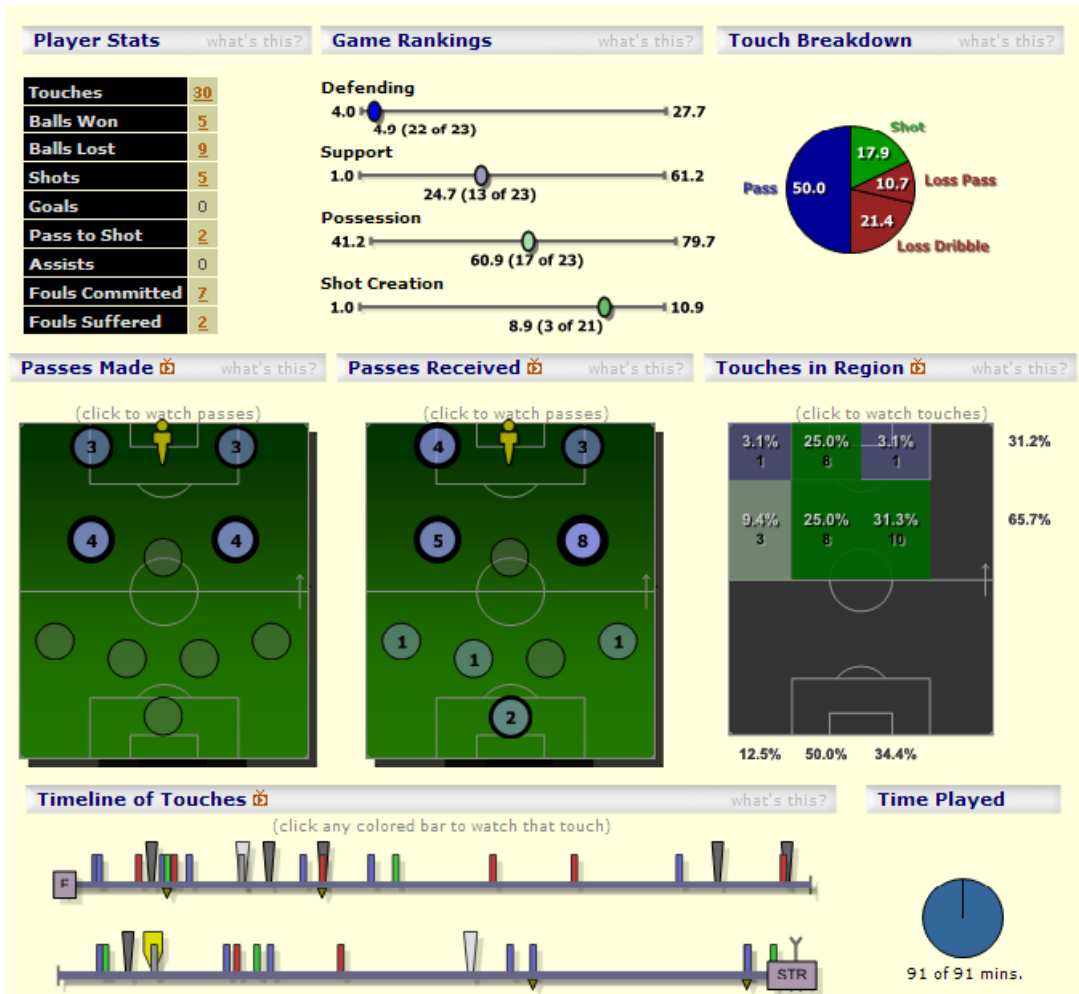
BROADCAST NOTES

Copyright © 2009 Match Analysis



Alfredo Moreno

San Luis v Toluca – Nov 22, 2009



Moreno stays central and receives most of his touches from Palacios. Found many chances to shoot but became fairly inactive at the end of the second half (see timeline). Large gaps in touches can indicate fitness issues or simply the limited role of San Luis's attack as Toluca attempts to score.

November 29, 2009

TOLUCA v SAN LUIS (Liga Mexicana – Apertura 2009 – Liguilla)

BROADCAST NOTES

Copyright © 2009 Match Analysis



Braulio Luna

San Luis v Toluca – Nov 22, 2009



Luna finds many opportunities to shoot. Luna alone took almost as many shots inside the penalty area (5) as the entire Toluca team (6). He represents a consistent threat, but rarely plays a defensive role (note only 4 balls won the entire game), leaving some free space for Toluca to attack through.

November 29, 2009

TOLUCA v SAN LUIS (Liga Mexicana – Apertura 2009 – Liguilla)

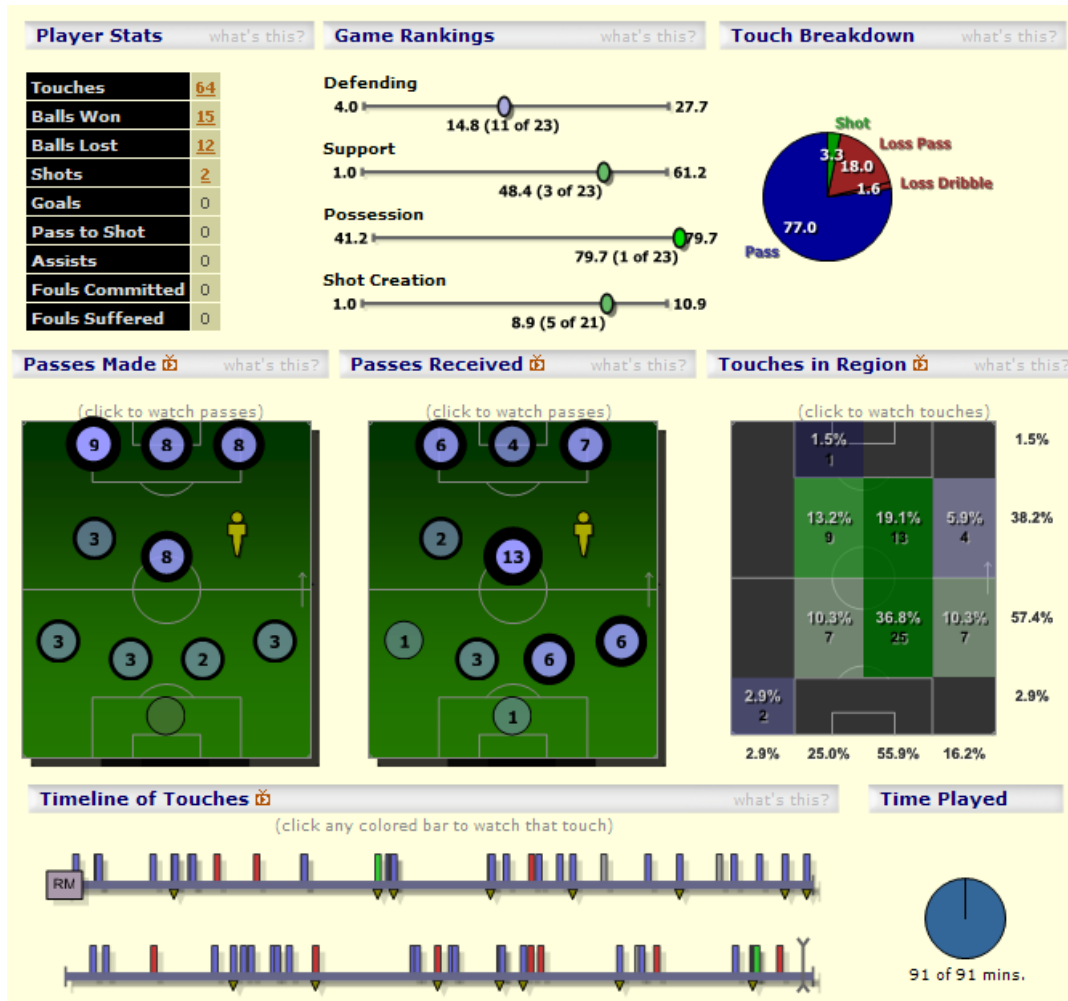
BROADCAST NOTES

Copyright © 2009 Match Analysis



Jesus Palacios

San Luis v Toluca – Nov 22, 2009



Palacios is the critical player for San Luis. You can see his distribution to the forwards playing 25 passes to the front line. Torres looks for Palacios consistently. Palacios is also the #1 possession player on the field. This combination of retaining possession with penetrating to the forwards is rare and was the critical element in the opening match.